



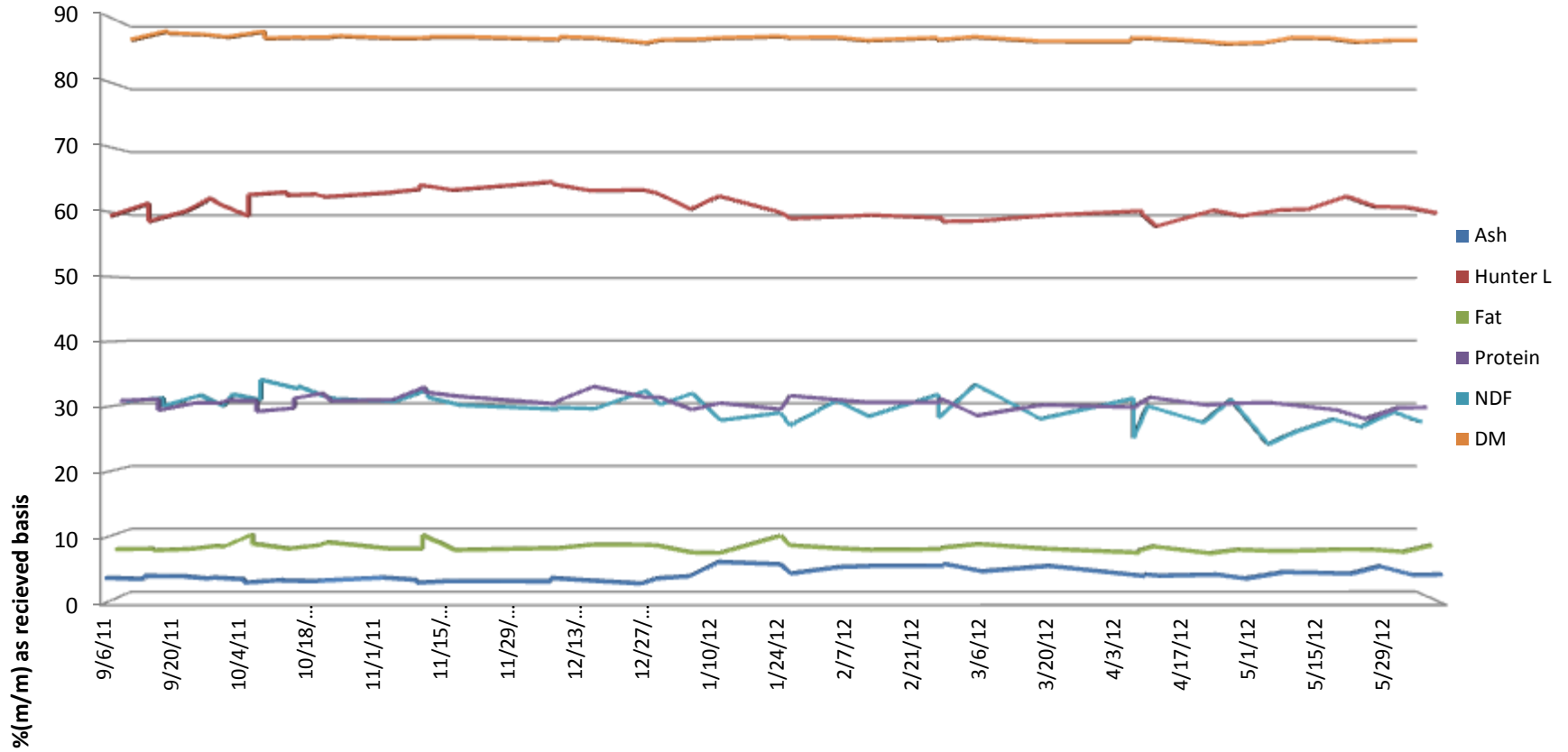
SGS Brookings
241 34th Ave
Brookings, SD 57006

IROQUOIS BIO ENERGY COMPANY

Rensselaer, IN



5500 Cenex Drive
Inver Grove
Heights, MN 55077
PH. 800-769-1066

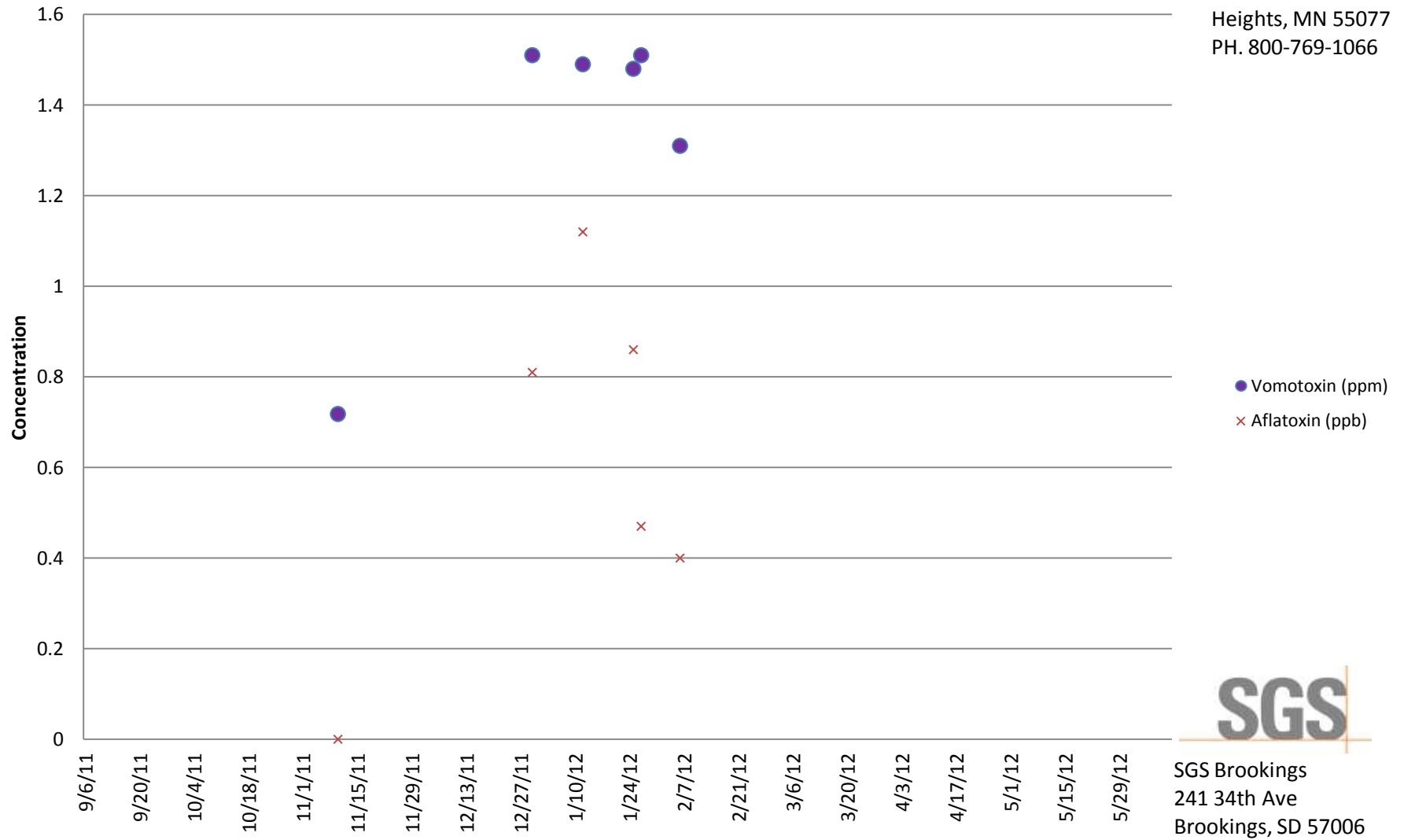


IROQUOIS BIO ENERGY COMPANY

Rensselaer, IN



Inver Grove Heights, MN 55077
PH. 800-769-1066



Customer: IROQUOIS BIO ENERGY COMPANY

Address: 751 W STATE ROAD 114
 RENSSELAER, IN
 UNITED STATES

Analyte			Crude ash as received	Hunter L Value	Phosphorus	Crude fat as is	NDF as received	Moisture	Drymatter	Aflatoxin	DON (Vomitoxin)	Crude protein as received
Scheme			Ash Content: Feed	Hunter Color	Minerals: As Received (No Drymatter)	Fat content in Animal Feed	NDF	Moisture Content	Moisture Content	Aflatoxin by ELISA	Vomitoxin (DON) by ELISA	Protein Content
Detection Limit					0.0063					5	0.5	
Unit	Received	Order	%(m/m)		%(m/m)	%(m/m)	%	%(m/m)	%(m/m)	PPB	PPM	%(m/m)
IBEC DDGS Comp Batches 2017-2023	9/6/2011 11:10	MW11-03187	3.982	59.35	0.75	7.79	30.5	12.24	87.76			30.69
NYS118357400	9/14/2011 11:14	MW11-03357	3.778	61.29	0.71	7.82	31.03	10.84	89.16			30.97
IBEC COMP. BATCHES: 2024-2033	9/14/2011 11:44	MW11-03360	4.262	58.49	0.72	7.59	29.73	11.16	88.84			29.2
NYC118443701	9/22/2011 10:19	MW11-03517	4.236	60.12	0.71	7.81	31.45	11.4	88.6			30.36
IBEC DDGS COMPOSITE BATCHES: 2034-2045	9/27/2011 10:08	MW11-03610	3.893	62.05	0.62	8.25	29.75	11.8	88.2			30.32
NYC119183200	9/29/2011 10:52	MW11-03676	4.002	61.13	0.7	8.21	31.58	11.56	88.44			30.77
NYC119475600	10/5/2011 10:25	MW11-03785	3.744	59.32	0.8	10.08	30.71	10.92	89.08			30.69
IBEC DDGS COMP. BATCHES: 2051-2058	10/5/2011 10:51	MW11-03791	3.231	62.61	0.67	8.63	33.89	12.01	87.99			29.01
LAX134981	10/13/2011 10:00	MW11-03987	3.647	63.01	0.62	7.81	32.46	11.84	88.16			29.53
IBEC DDGS COMP BATCHES:2060-2067	10/13/2011 10:02	MW11-03988	3.57	62.53	0.6	7.88	32.86	11.9	88.1			31.07
LAX135265	10/19/2011 13:13	MW11-04135	3.462	62.7	0.47	8.36	31.23	11.82	88.18			31.84

Customer: IROQUOIS BIO ENERGY COMPANY

Address: 751 W STATE ROAD 114
 RENSSELAER, IN
 UNITED STATES

Analyte			Crude ash as received	Hunter L Value	Phosphorus	Crude fat as is	NDF as received	Moisture	Drymatter	Aflatoxin	DON (Vomitoxin)	Crude protein as received
Scheme			Ash Content: Feed	Hunter Color	Minerals: As Received (No Drymatter)	Fat content in Animal Feed	NDF	Moisture Content	Moisture Content	Aflatoxin by ELISA	Vomitoxin (DON) by ELISA	Protein Content
Detection Limit					0.0063					5	0.5	
Unit	Received	Order	%(m/m)		%(m/m)	%(m/m)	%	%(m/m)	%(m/m)	PPB	PPM	%(m/m)
IBEC DDGS COMP. BATCHES: 2068-2076	10/21/2011 10:14	MW11-04169	3.54	62.29	0.57	8.85	30.87	11.64	88.36			30.66
CHI118394100	11/3/2011 10:26	MW11-04438	4.007	62.9	0.75	7.85	30.45	12	88			30.83
IBEC DDGS COMP. BATCHES: 2085-2089	11/10/2011 10:35	MW11-04613	3.65	63.44	0.76	7.83	32.26	11.93	88.07			32.84
CHI118167600	11/10/2011 10:39	MW11-04615	3.218	64.12	0.78	9.98	31.1	11.79	88.21	<5	0.718	32.02
C DDGS BATCHES: 2094-2102	11/17/2011 10:15	MW11-04774	3.494	63.33	0.79	7.64	29.88	11.75	88.25			31.38
IBEC DDGS COMP. BATCHES: 2115-2121	12/8/2011 9:53	MW11-05236	3.424	64.6	0.79	7.94	29.23	12.18	87.82			30.17
IBEC DDGS COMP. BATCHES: 2122-2127	12/8/2011 9:55	MW11-05237	3.949	64.26	0.85	7.88	29.5	11.76	88.24			30.56
IBEC DDGS COMP. BATCHES: 2128-2141	12/16/2011 9:40	MW11-05434	3.574	63.24	0.74	8.46	29.32	11.96	88.04			32.91
IBEC DDGS COMP. BATCHES: 2143-2150	12/27/2011 8:39	MW11-05581	3.101	63.35	0.69	8.44	32.16	12.72	87.28			31.23
IBEC DDGS COMP. BATCHES: 2151-2166	12/30/2011 9:58	MW11-05702	3.882	62.86	0.78	8.32	29.98	12.25	87.75	0.81	1.51	31.25
BATCH: 2167, 2169-2174	1/6/2012 10:47	MW12-00140	4.233	60.39	0.89	7.26	31.73	12.21	87.79			29.29

Customer: IROQUOIS BIO ENERGY COMPANY

Address: 751 W STATE ROAD 114
 RENNELAER, IN
 UNITED STATES

Analyte			Crude ash as received	Hunter L Value	Phosphorus	Crude fat as is	NDF as received	Moisture	Drymatter	Aflatoxin	DON (Vomitoxin)	Crude protein as received
Scheme			Ash Content: Feed	Hunter Color	Minerals: As Received (No Drymatter)	Fat content in Animal Feed	NDF	Moisture Content	Moisture Content	Aflatoxin by ELISA	Vomitoxin (DON) by ELISA	Protein Content
Detection Limit					0.0063					5	0.5	
Unit	Received	Order	%(m/m)		%(m/m)	%(m/m)	%	%(m/m)	%(m/m)	PPB	PPM	%(m/m)
BATCH: 2175-2181	1/12/2012 10:39	MW12-00268	6.406	62.41	0.9	7.17	27.48	11.95	88.05	1.12	1.49	30.33
BATCH 2182-2189	1/25/2012 11:11	MW12-00554	6.04	59.88	1	9.86	28.68	11.69	88.31	0.86	1.48	29.34
BATCH: 2190-2197	1/27/2012 10:31	MW12-00617	4.619	58.95	0.92	8.37	26.64	11.89	88.11	0.47	1.51	31.47
BATCH: 2198-2206	2/6/2012 10:12	MW12-00831	5.616	59.23	0.96	7.9	30.58	11.86	88.14	0.4	1.31	30.83
BATCH 2207-2210, 2212-2214	2/13/2012 10:50	MW12-00977	5.788	59.49	0.92	7.67	28.11	12.34	87.66			30.41
BATCH 2225-2230 AND 2234	2/28/2012 11:13	MW12-01285	5.838	59.02	0.95	7.76	31.56	11.89	88.11			30.43
BATCH 2217,2218, 2220, 2223, 2224	2/28/2012 11:16	MW12-01287	6.127	58.5	1.01	7.97	27.89	12.27	87.73			31.1
BATCH: 2232-2238	3/7/2012 10:23	MW12-01468	4.968	58.6	0.9	8.56	33.13	11.77	88.23			28.37
BATCH 2247-2254	3/21/2012 10:28	MW12-01811	5.796	59.44	0.91	7.84	27.71	12.45	87.55			30.04
BATCH: 2255-2263	4/10/2012 10:47	MW12-02244	4.238	60.13	0.86	7.21	30.94	12.49	87.51			29.65
BATCH: 2264-2268 AND 2270	4/10/2012 10:50	MW12-02246	4.499	59.62	0.89	7.55	24.72	12.02	87.98			29.88

Customer: IROQUOIS BIO ENERGY COMPANY

Address: 751 W STATE ROAD 114
 RENNELAER, IN
 UNITED STATES

Analyte			Crude ash as received	Hunter L Value	Phosphorus	Crude fat as is	NDF as received	Moisture	Drymatter	Aflatoxin	DON (Vomitoxin)	Crude protein as received
Scheme			Ash Content: Feed	Hunter Color	Minerals: As Received (No Drymatter)	Fat content in Animal Feed	NDF	Moisture Content	Moisture Content	Aflatoxin by ELISA	Vomitoxin (DON) by ELISA	Protein Content
Detection Limit					0.0063					5	0.5	
Unit	Received	Order	%(m/m)		%(m/m)	%(m/m)	%	%(m/m)	%(m/m)	PPB	PPM	%(m/m)
BATCH: 2272, 2274-2277	4/13/2012 10:56	MW12-02368	4.296	57.76	0.89	8.19	29.75	11.95	88.05			31.22
BATCH: 2278-2286	4/25/2012 9:56	MW12-02623	4.468	60.21	0.88	7.13	27.12	12.44	87.56			30.01
BATCH 2287-2294	5/1/2012 11:18	MW12-02787	3.873	59.36	0.96	7.69	30.79	12.85	87.15			30.3
BATCH: 2295-2302	5/9/2012 10:46	MW12-02984	4.837	60.26	0.89	7.47	23.72	12.68	87.32			30.37
BATCH: 2304-2312	5/15/2012 11:17	MW12-03120	4.764	60.4	0.89	7.54	25.71	11.91	88.09			29.86
BATCH: 2313-2317	5/23/2012 10:06	MW12-03312	4.604	62.36	0.83	7.74	27.67	11.98	88.02			29.22
BATCH: 2321-2324 AND 2326-2328	5/29/2012 10:54	MW12-03427	5.739	60.81	0.83	7.73	26.47	12.57	87.43			27.85
BATCH: 2329-2333 AND 2335 AND 2336	6/5/2012 10:35	MW12-03643	4.402	60.66	0.98	7.36	28.82	12.32	87.68			29.59
BATCH: 2337-2345	6/11/2012 10:25	MW12-03803	4.491	59.79	0.89	8.37	27.24	12.31	87.69			29.63
BATCH: 2346 AND 2348-2353	6/19/2012 9:59	MW12-04037	4.612	60.72	0.9	7.61	25.1	12.37	87.63			30.2
BATCH: 2354 AND 2357-2360	7/2/2012 10:44	MW12-04488	4.555	57.19	0.94	8.06	29.94	12	88			30.02

Customer: IROQUOIS BIO ENERGY COMPANY

Address: 751 W STATE ROAD 114
 RENNELAER, IN
 UNITED STATES

Analyte			Crude ash as received	Hunter L Value	Phosphorus	Crude fat as is	NDF as received	Moisture	Drymatter	Aflatoxin	DON (Vomitoxin)	Crude protein as received
Scheme			Ash Content: Feed	Hunter Color	Minerals: As Received (No Drymatter)	Fat content in Animal Feed	NDF	Moisture Content	Moisture Content	Aflatoxin by ELISA	Vomitoxin (DON) by ELISA	Protein Content
Detection Limit					0.0063					5	0.5	
Unit	Received	Order	%(m/m)		%(m/m)	%(m/m)	%	%(m/m)	%(m/m)	PPB	PPM	%(m/m)
BATCH: 2370-2374	7/10/2012 10:21	MW12-04687	4.704	58.95	0.86	7.44	28.96	12.15	87.85			30.63
BATCH: 2361-2363 AND 2365-2367	7/10/2012 10:25	MW12-04690	4.6	60.24	0.81	7.13	28.53	11.95	88.05			30.28
DDG TAG WB 071612-072312	7/25/2012 10:49	MW12-05152	5.922	59.28	0.93	7.78	29.84	11.97	88.03			30.52
BATCH: 2382-2388	7/25/2012 10:52	MW12-05154	6.128	59.45	0.92	7.71	27.43	10.92	89.08			31.8
DDG BATCHES: 2389-2396(-2393)	8/1/2012 10:19	MW12-05335	4.654	59.56	0.95	7.06	25.6	11.79	88.21			30.91
BATCH: 2397, 2399-2403	8/6/2012 10:46	MW12-05448	4.715	59.85	0.91	7.6	28.02	11.94	88.06			31.01
DDG COMPOSITE BATCHES: 2404-2410	8/20/2012 10:46	MW12-05799	4.466	58.5	0.91	7.29	26.23	12.08	87.92			30.28
BATCH: 2411-2417	8/22/2012 9:51	MW12-05856	4.43	58.49	0.93	7.85	29.11	12.11	87.89			29.08
BATCHES: 2418-2426	8/24/2012 11:28	MW12-05934	4.398	57.56	0.87	8.76	30.86	9.37	90.63			28.54
BATCHES: 2427-2434	9/5/2012 11:03	MW12-06154	4.726	59.96	0.92	8.14	28.96	11.98	88.02	<5	1.024	30.08
DDGS COMP 2436-2443	9/12/2012 10:28	MW12-06332	4.613	58.14	0.05	7.9	26.87	12.35	87.65	<5	0.695	30.3

Customer: IROQUOIS BIO ENERGY COMPANY

Address: 751 W STATE ROAD 114
 RENSSELAER, IN
 UNITED STATES

Analyte			Crude ash as received	Hunter L Value	Phosphorus	Crude fat as is	NDF as received	Moisture	Drymatter	Aflatoxin	DON (Vomitoxin)	Crude protein as received
Scheme			Ash Content: Feed	Hunter Color	Minerals: As Received (No Drymatter)	Fat content in Animal Feed	NDF	Moisture Content	Moisture Content	Aflatoxin by ELISA	Vomitoxin (DON) by ELISA	Protein Content
Detection Limit					0.0063					5	0.5	
Unit	Received	Order	%(m/m)		%(m/m)	%(m/m)	%	%(m/m)	%(m/m)	PPB	PPM	%(m/m)
BATCHES 2444-2449	9/19/2012 10:38	MW12-06553	4.877	58.86	0.95	8	26.59	12.34	87.66	<5	0.73	30.13
BATCHES: 2450-2455, 2457-2458, 2460-2461	9/28/2012 11:09	MW12-06814	4.592	55.97	0.86	7.86	27.65	12.84	87.16	<5	0.619	30.86
BATCHES: 2462-2466	10/3/2012 11:05	MW12-06922	4.844	61.41	0.86	7.06	28.31	12.58	87.42	<5	0.787	31.85
BATCHES: 2468-2474	10/12/2012 11:28	MW12-07156	4.508	61.46	0.82	7.61	28.95	12.39	87.61	<5	0.936	31.75