



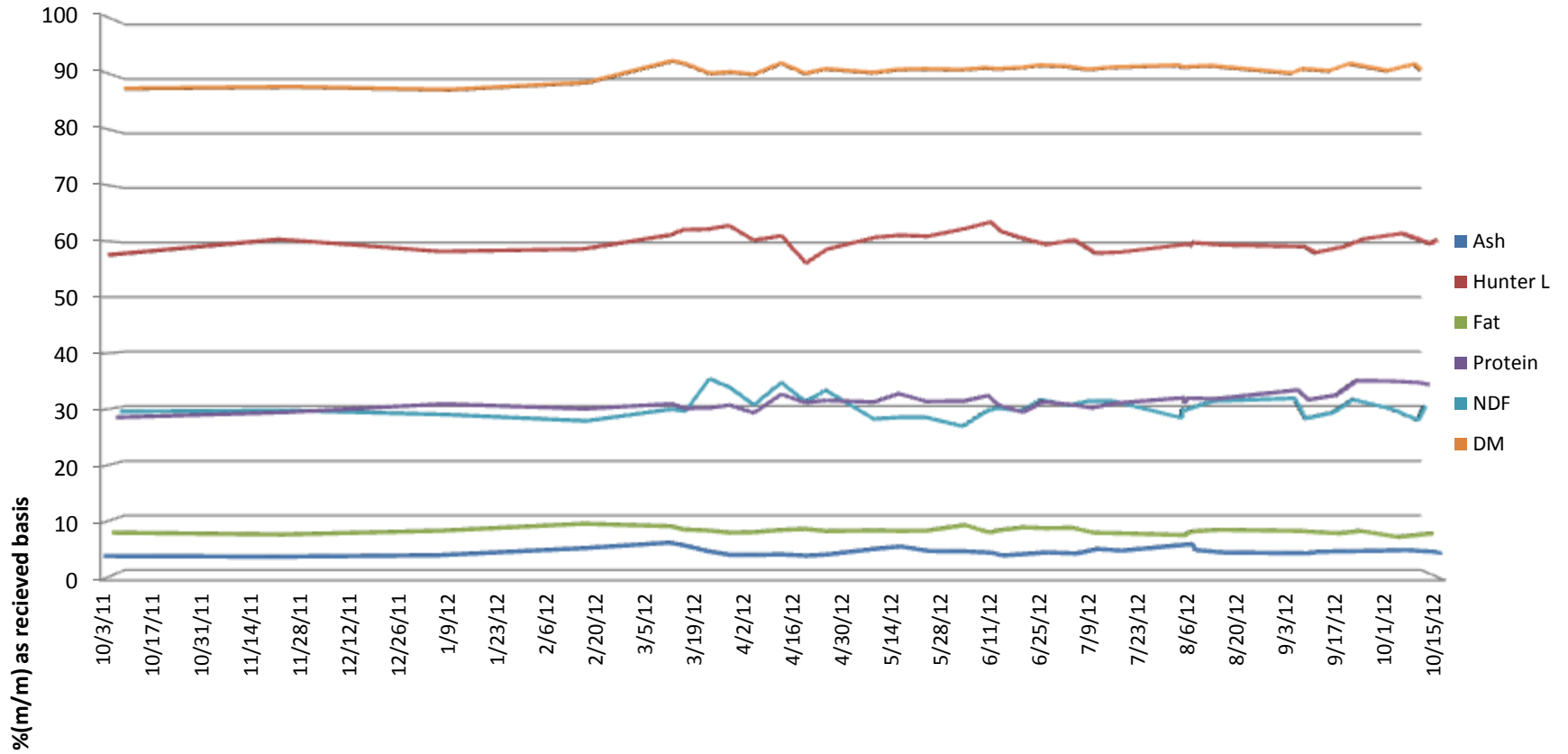
SGS Brookings
241 34th Ave
Brookings, SD 57006

LINCOLNLAND AGRI-ENERGY

Palestine, IL



5500 Cenex Drive
Inver Grove
Heights, MN 55077
PH. 800-769-1066

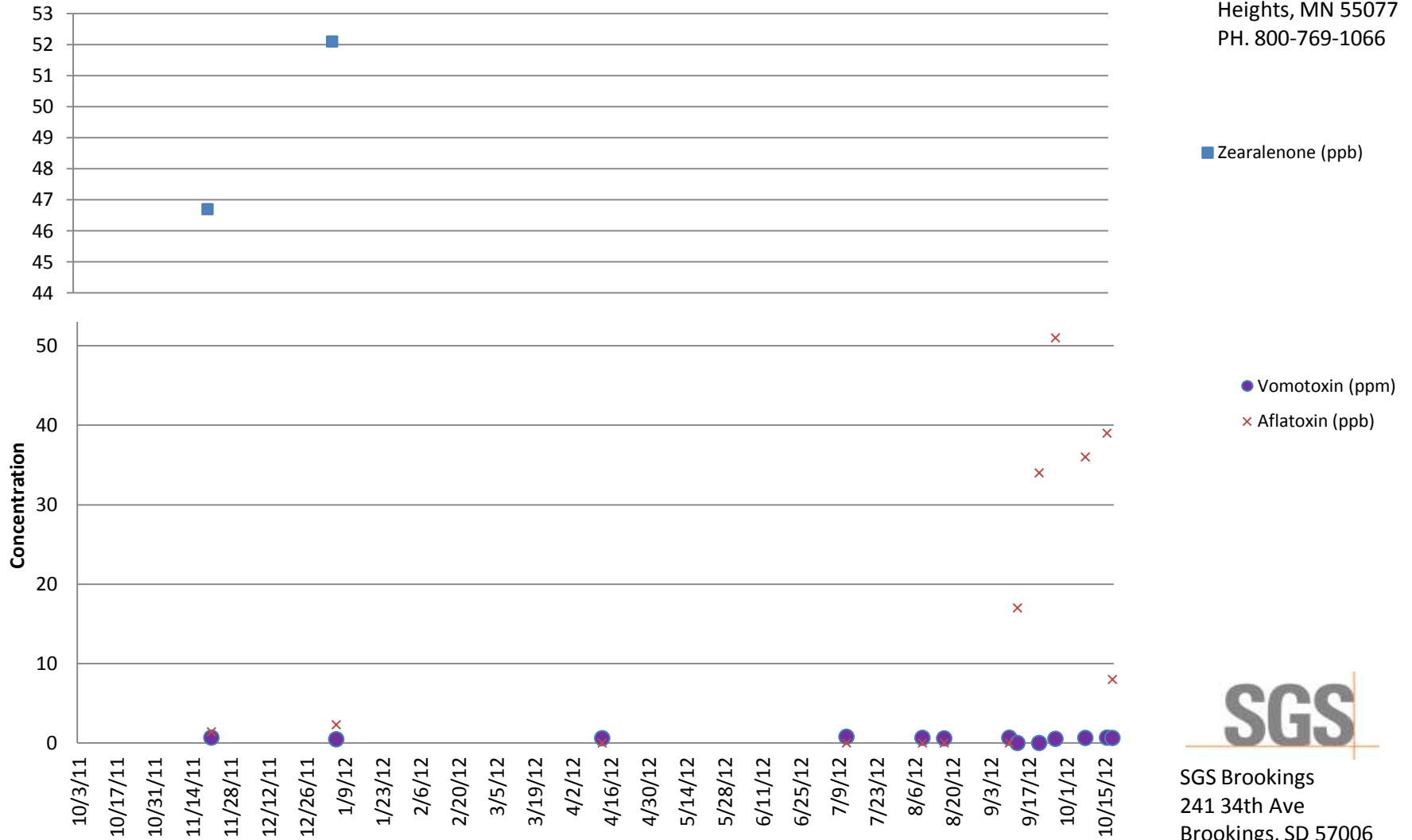


LINCOLNLAND AGRI-ENERGY

Palestine, IL



Inver Grove Heights, MN 55077
PH. 800-769-1066



SGS Brookings
241 34th Ave
Brookings, SD 57006

Customer: LINCOLNLAND AGRIENERGY

Address: 10406 N 1725TH ST
PALESTINE, IL
UNITED STATES

Analyte			Lysine	Crude ash as received	Hunter L Value	Phosphorus	Crude fat as is	NDF as received	Moisture	Drymatter	Aflatoxin	DON (Vomitoxin)	T2 toxin	Zearalenone	Crude protein as received
Scheme			Amino Acid Profile	Ash Content: Feed	Hunter Color	Minerals: As Received (No Drymatter)	Fat content in Animal	NDF	Moisture Content	Moisture Content	Aflatoxin by ELISA	Vomitoxin (DON) by ELISA	Mycotoxin content by LC/MS/MS	Mycotoxin content by LC/MS/MS	Protein Content
Detection Limit						0.0063					5	0.5	40	8	
Unit	Received	Order	%	%(m/m)		%(m/m)	%(m/m)	%	%(m/m)	%(m/m)	PPB	PPM	PPB	PPB	%(m/m)
D1-092711	10/3/2011 8:12	MW11-03718		4.126	57.55	0.83	7.74	29.23	11.85	88.15					28.29
D1-111711	11/21/2011 11:02	MW11-04847		4.004	60.32	0.96	7.4	29.43	11.53	88.47	1.4	0.68	<40	46.7	29.21
D1-010312	1/6/2012 11:19	MW12-00152		4.262	58.16	0.97	8.09	28.67	12.07	87.93	2.3	0.47	<40	52.1	30.71
D1-021312	2/16/2012 10:22	MW12-01086		5.496	58.58	0.86	9.34	27.51	10.75	89.25					29.84
D1-030512	3/12/2012 10:43	MW12-01566		6.489	61.09	0.89	8.88	29.66	6.79	93.21					30.73
D1-031312	3/16/2012 11:08	MW12-01715		6.054	62.02	0.95	8.29	29.3	7.37	92.63					29.96
D1-032012	3/23/2012 10:33	MW12-01876		4.993	62.13	0.85	8.13	35.18	9.11	90.89					29.98
D1-032612	3/29/2012 10:02	MW12-01999		4.354	62.78	0.86	7.73	33.57	8.83	91.17					30.52
d1-040212	4/5/2012 10:48	MW12-02162		4.317	60.16	1.11	7.82	30.42	9.27	90.73					29.11
D1-041012	4/13/2012 11:15	MW12-02377	1.14	4.407	60.94	0.84	8.22	34.48	7.21	92.79	<5	0.603			32.45
D1-041612	4/20/2012 10:51	MW12-02551		4.18	56.06	0.83	8.39	31.05	9.11	90.89					30.96
D1-042312	4/26/2012 9:53	MW12-02647		4.389	58.54	0.97	8.01	33.07	8.26	91.74					31.36
D1-050112	5/10/2012 10:14	MW12-03010		5.415	60.68	1.02	8.13	27.88	8.95	91.05					31.06
D1-051512	5/17/2012 9:54	MW12-03182		5.814	61.05	0.88	8.04	28.14	8.39	91.61					32.59
D1-052212	5/25/2012 10:31	MW12-03401		5.007	60.86	0.9	8.09	28.19	8.27	91.73					31.18
DA-053112	6/5/2012 10:34	MW12-03642		4.934	62.28	0.99	9.11	26.54	8.41	91.59					31.23
D1-060612	6/12/2012 10:20	MW12-03831		4.685	63.42	0.87	7.75	29.33	8.07	91.93					32.24
D1-061212	6/15/2012 10:52	MW12-03983		4.214	61.71	0.88	8.19	29.85	8.25	91.75					30.55
D1-061812	6/22/2012 11:14	MW12-04190		4.512	60.35	0.84	8.69	29.37	8.07	91.93					29.21
DI-062512	6/28/2012 11:11	MW12-04392		4.766	59.38	0.88	8.53	31.35	7.6	92.4					31.13
D1-070212	7/6/2012 10:40	MW12-04635		4.568	60.21	0.93	8.61	30.35	7.8	92.2					30.61
D1-070912	7/12/2012 10:47	MW12-04796	1.01	5.377	57.87	0.98	7.72	31.15	8.37	91.63	<5	0.782			30.01

Customer: LINCOLNLAND AGRIENERGY

Address: 10406 N 1725TH ST
PALESTINE, IL
UNITED STATES

Analyte			Lysine	Crude ash as received	Hunter L Value	Phosphorus	Crude fat as is	NDF as received	Moisture	Drymatter	Aflatoxin	DON (Vomitoxin)	T2 toxin	Zearalenone	Crude protein as received
Scheme			Amino Acid Profile	Ash Content: Feed	Hunter Color	Minerals: As Received (No Drymatter)	Fat content in Animal	NDF	Moisture Content	Moisture Content	Aflatoxin by ELISA	Vomitoxin (DON) by ELISA	Mycotoxin content by LC/MS/MS	Mycotoxin content by LC/MS/MS	Protein Content
Detection Limit						0.0063					5	0.5	40	8	
Unit	Received	Order	%	%(m/m)		%(m/m)	%(m/m)	%	%(m/m)	%(m/m)	PPB	PPM	PPB	PPB	%(m/m)
D1-071612	7/19/2012 11:08	MW12-05012		5.075	58.02	1.09	7.63	31.11	7.97	92.03					30.85
D1-073112	8/8/2012 11:29	MW12-05530		6.242	59.49	1.02	7.28	28.06	7.58	92.42					31.83
D1-072512	8/8/2012 11:34	MW12-05531		6.285	59.1	1.05	7.62	29.7	7.81	92.19					30.83
D1-080612	8/9/2012 11:14	MW12-05575		5.188	59.73	0.98	7.92	29.49	7.91	92.09	<5	0.65			31.78
D1-081412	8/17/2012 11:03	MW12-05772		4.748	59.33	0.95	8.25	31.12	7.68	92.32	<5	0.585			31.63
D1-090412	9/10/2012 10:26	MW12-06261	0.99	4.609	59.01	0.9	8.03	31.62	9.05	90.95	<5	0.665			33.24
D1-091012	9/13/2012 11:37	MW12-06377		4.889	57.94	0.96	7.88	27.95	8.25	91.75	17	<0.5			31.47
D1-091812	9/21/2012 9:58	MW12-06605		4.974	58.96	0.94	7.61	29	8.61	91.39	34	<0.5			32.31
D1-092412	9/27/2012 10:19	MW12-06767		5.02	60.37	0.92	8.05	31.41	7.29	92.71	51	0.522			34.92
D1-100212	10/8/2012 11:23	MW12-07011		5.171	61.39	0.92	6.95	29.73	8.59	91.41	36	0.636			34.83
WEEKLY	10/16/2012 11:11	MW12-07232	1.04	4.872	59.56	0.92	7.48	27.68	7.39	92.61	39	0.673			34.52
CHS WEEKLY 10/18	10/18/2012 10:11	MW12-07288		4.61	60.19	0.87	7.62	30.3	8.47	91.53	8	0.635			34.2