



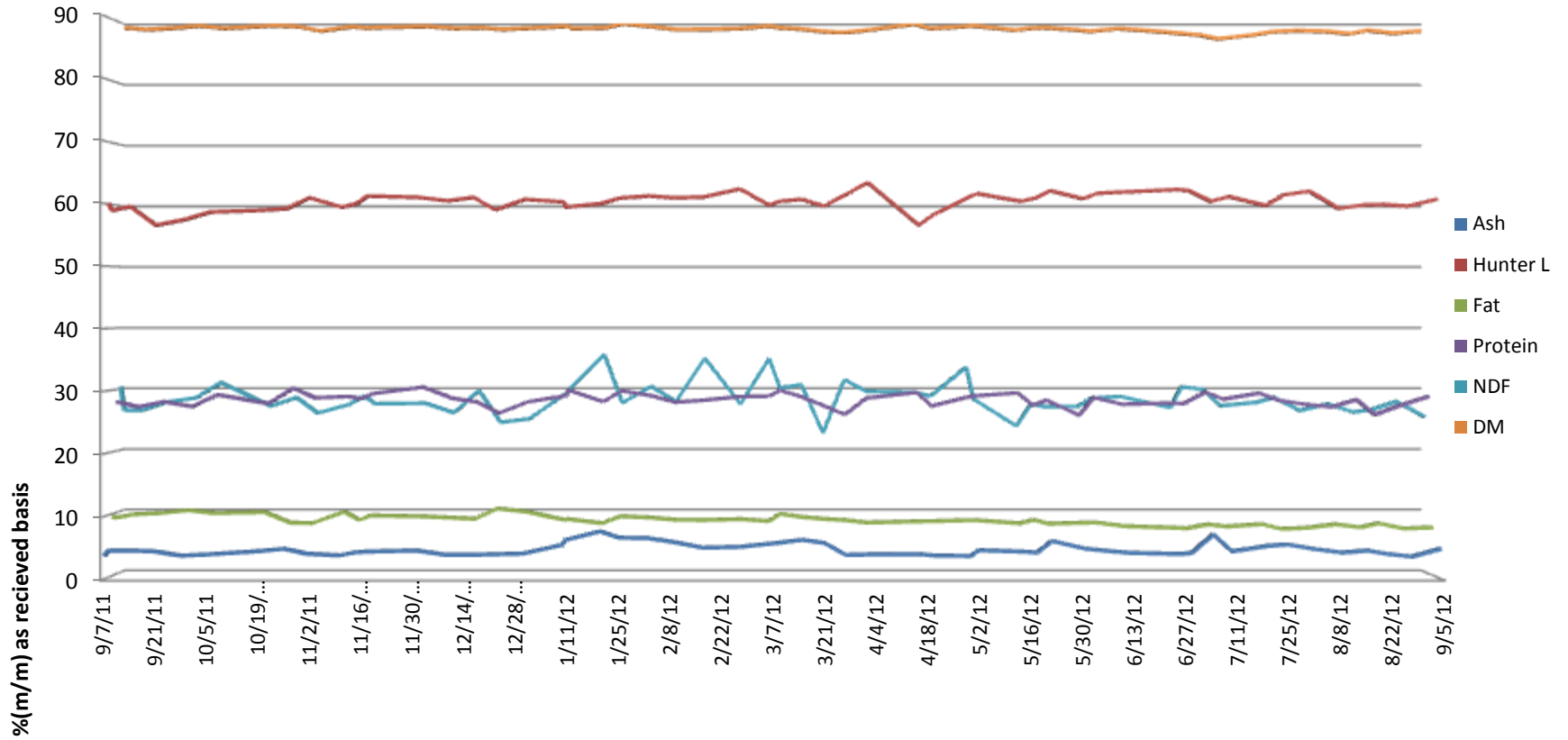
SGS Brookings  
241 34th Ave  
Brookings, SD 57006

# PATRIOT RENEWABLE FUELS

Annawan, IL



5500 Cenex Drive  
Inver Grove  
Heights, MN 55077  
PH. 800-769-1066

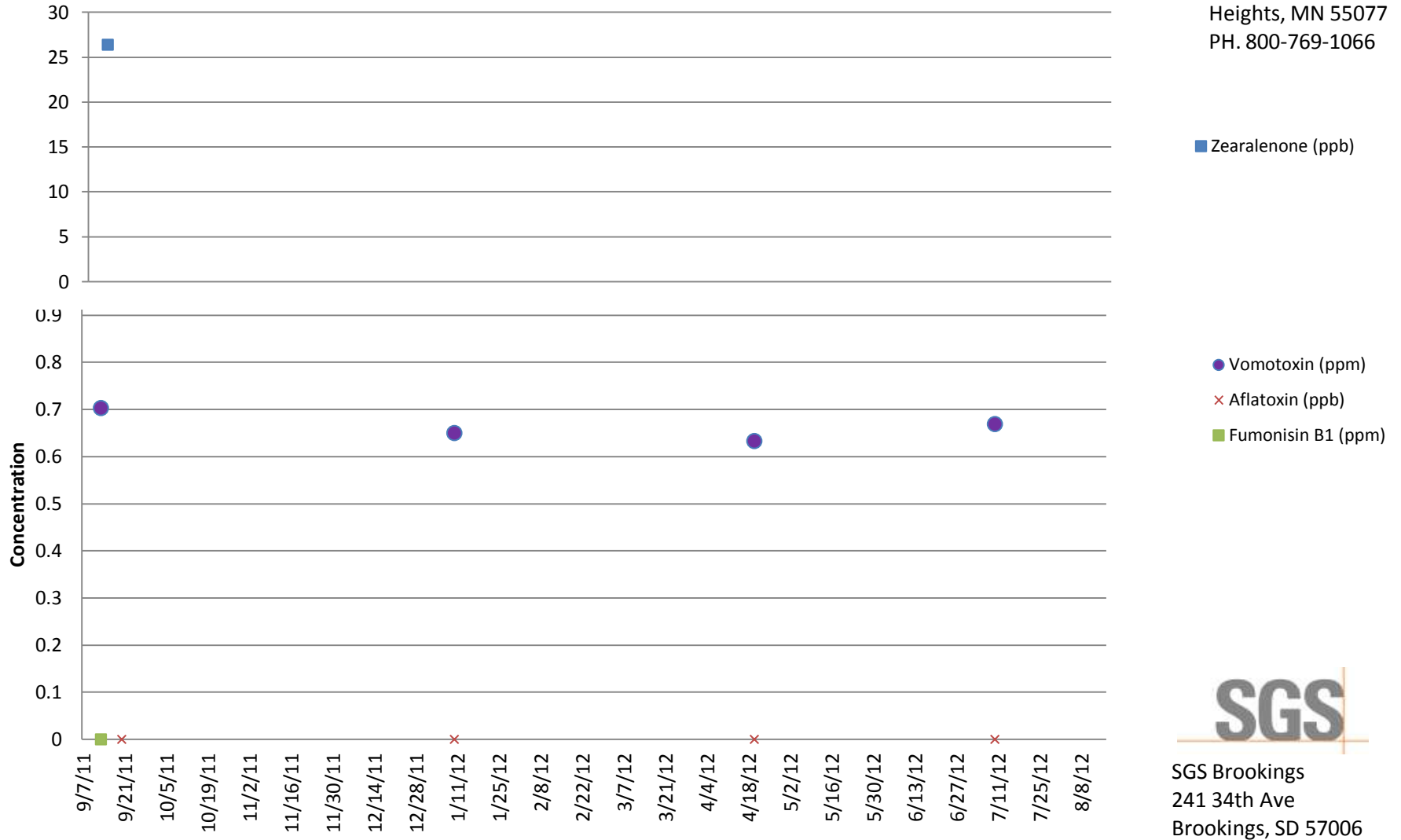


# PATRIOT RENEWABLE FUELS

Annawan, IL



Inver Grove Heights, MN 55077  
PH. 800-769-1066



SGS Brookings  
241 34th Ave  
Brookings, SD 57006

**Customer:** PATRIOT RENEWABLE FUELS

**Address:** 101 PATRIOT WAY  
ANNAWAN, IL  
UNITED STATES

Analyte			Lysine	Crude ash as received	Hunter L Value	Phosphorus	Crude fat as is	NDF as received	Moisture	Drymatter	Aflatoxin	DON (Vomitoxin)	Fumonisin	T2	Zearalenon	Crude protein as received
Scheme			Amino Acid Profile	Ash Content: Feed	Hunter Color	Minerals: As Received (No Drymatter)	Fat content in Animal Feed	NDF	Moisture Content	Moisture Content	Aflatoxin by ELISA	Vomitoxin (DON) by ELISA	Fumonisin by ELISA	T2 by ELISA	Zearalenon by ELISA	Protein Content
Detection Limit						0.0063					5	0.5	1	25	25	
Unit	Received	Order	%	%(m/m)		%(m/m)	%(m/m)	%	%(m/m)	%(m/m)	PPB	PPM	PPM	PPB	PPB	%(m/m)
8/22-8/26	9/7/2011 10:55	MW11-03202		3.791	60.08	0.81	9.61	30.47	10.82	89.18						28.01
8/29-9/3	9/8/2011 12:20	MW11-03234		4.599	58.93	0.85	9.45	26.57	10.7	89.3						27.9
DDGS COMPOSITE 9/6-9/9	9/13/2011 10:21	MW11-03316		4.613	59.57	0.74	9.98	26.54	10.97	89.03	<5	0.703	<1	41.968	26.382	27.22
9/12-9/17	9/20/2011 10:27	MW11-03449	0.97	4.544	56.57	0.82	10.16	27.91	10.76	89.24	<5	0.934				28.05
9/19-9/23	9/28/2011 10:27	MW11-03640		3.817	57.49	0.76	10.64	28.58	10.36	89.64						27.27
9/26-9/30	10/5/2011 10:38	MW11-03787		4.005	58.69	0.83	10.17	31.07	10.77	89.23						29.18
10/10-10/14	10/19/2011 10:41	MW11-04122		4.532	58.96	0.83	10.33	27.23	10.32	89.68						27.73
10/17-10/21	10/26/2011 10:50	MW11-04259		4.91	59.24	0.82	8.62	28.65	10.49	89.51						30.25
10/24-10/28	11/1/2011 10:36	MW11-04375		4.137	60.97	0.94	8.55	26.1	11.21	88.79						28.68
DDGS COMPOSITE 10/31-11/5	11/10/2011 10:41	MW11-04616		3.85	59.46	0.89	10.41	27.53	10.48	89.52						28.89
10/31-11/5	11/14/2011 10:27	MW11-04667		4.324	60.05	0.93	9.05	28.9	10.74	89.26						28.55
11/7-11/11	11/17/2011 10:13	MW11-04773		4.46	61.26	0.93	9.79	27.61	10.62	89.38						29.35
11/21-11/26	12/1/2011 10:51	MW11-05062		4.639	61.04	0.53	9.65	27.7	10.45	89.55						30.42
11/28-12/2	12/9/2011 8:45	MW11-05277		3.941	60.48	0.92	9.45	26.12	10.77	89.23						28.63
12/5-12/9	12/16/2011 9:09	MW11-05428		3.962	61.04	0.86	9.24	29.81	10.68	89.32						27.99
12/12-12/16	12/22/2011 9:44	MW11-05565		4.034	59.01	0.9	10.93	24.57	10.93	89.07						26.18
12/19-12/24	12/30/2011 10:14	MW11-05708		4.153	60.72	0.95	10.4	25.14	10.73	89.27						28.03
12/26-12/30	1/10/2012 10:19	MW12-00194		5.572	60.29	1.01	9.05	29.6	10.41	89.59						29.05
1/2-1/6	1/10/2012 10:21	MW12-00195	0.96	6.237	59.47	0.95	9.24	29.82	10.8	89.2	<5	0.65				29.99
1/9-1/13	1/20/2012 11:04	MW12-00463		7.699	60.05	0.92	8.54	35.63	10.68	89.32						28.06
1/16-1/20	1/25/2012 11:08	MW12-00553		6.69	60.92	0.82	9.66	27.75	10	90						29.82

**Customer:** PATRIOT RENEWABLE FUELS

**Address:** 101 PATRIOT WAY  
ANNAWAN, IL  
UNITED STATES

Analyte			Lysine	Crude ash as received	Hunter L Value	Phosphorus	Crude fat as is	NDF as received	Moisture	Drymatter	Aflatoxin	DON (Vomitoxin)	Fumonisin	T2	Zearalenon	Crude protein as received
Scheme			Amino Acid Profile	Ash Content: Feed	Hunter Color	Minerals: As Received (No Drymatter)	Fat content in Animal Feed	NDF	Moisture Content	Moisture Content	Aflatoxin by ELISA	Vomitoxin (DON) by ELISA	Fumonisin by ELISA	T2 by ELISA	Zearalenon by ELISA	Protein Content
Detection Limit						0.0063					5	0.5	1	25	25	
Unit	Received	Order	%	%(m/m)		%(m/m)	%(m/m)	%	%(m/m)	%(m/m)	PPB	PPM	PPM	PPB	PPB	%(m/m)
1/23-1/27	2/2/2012 10:51	MW12-00762		6.599	61.26	0.81	9.46	30.46	10.48	89.52						29.05
1/30-2/3	2/9/2012 10:19	MW12-00925		5.992	60.98	0.81	9.11	27.98	10.96	89.04						27.97
2/6-2/10 2012	2/17/2012 10:43	MW12-01096		5.08	61.09	0.94	9.05	35.05	10.93	89.07						28.29
2/13-2/17 2012	2/27/2012 10:19	MW12-01253		5.216	62.4	0.87	9.2	27.59	10.79	89.21						28.88
2/20-2/24	3/6/2012 10:11	MW12-01431		5.706	59.78	0.9	8.87	34.99	10.37	89.63						28.95
2/27-3/2	3/9/2012 10:23	MW12-01538		5.891	60.43	0.84	10.05	30.19	10.69	89.31						29.92
3/5-3/9	3/15/2012 11:16	MW12-01677		6.347	60.74	0.85	9.55	30.75	10.88	89.12						28.82
3/12-3/16	3/21/2012 10:41	MW12-01815		5.829	59.62	0.84	9.23	22.84	11.28	88.72						27.44
3/19-3/23	3/27/2012 10:24	MW12-01935		3.925	61.49	0.81	9.04	31.57	11.45	88.55						25.95
3/26-3/30	4/2/2012 11:04	MW12-02064		4.017	63.4	0.82	8.64	29.64	11.11	88.89						28.64
4/2-4/6	4/16/2012 9:50	MW12-02396		4.065	56.57	0.79	8.84	29.49	10.05	89.95						29.56
4/9-4/13	4/20/2012 10:37	MW12-02550	1.01	3.823	58.27	0.79	8.87	28.83	10.8	89.2	<5	0.633				27.34
4/16-4/20	4/30/2012 9:57	MW12-02728		3.768	61.13	0.84	9.02	33.61	10.46	89.54						28.8
4/23-4/27	5/2/2012 10:28	MW12-02811		4.689	61.64	0.9	9.02	28.38	10.33	89.67						28.99
4/30-5/4	5/14/2012 11:42	MW12-03068		4.463	60.4	0.81	8.52	23.97	11.05	88.95						29.49
5/7-5/11	5/18/2012 10:50	MW12-03233		4.311	60.95	0.73	9.09	27.52	10.78	89.22						27.47
5/14-5/18	5/22/2012 10:58	MW12-03285		6.165	62.11	0.73	8.45	27.11	10.66	89.34						28.3
5/21-5/25	5/31/2012 10:21	MW12-03507		4.947	60.82	0.85	8.61	27.17	10.99	89.01						25.83
5/29-6/1	6/4/2012 10:30	MW12-03606		4.691	61.71	0.87	8.65	28.5	11.26	88.74						28.73
6/4-6/8	6/12/2012 10:51	MW12-03842		4.271	61.92	0.81	8.06	28.8	10.79	89.21						27.62
6/11-6/15	6/26/2012 10:35	MW12-04271		4.085	62.3	0.73	7.8	26.98	11.4	88.6						27.85
6/18-6/22/12	6/29/2012 11:16	MW12-04447		4.242	62.11	0.81	7.71	30.37	11.57	88.43						27.72
6/25-6/29	7/5/2012 10:31	MW12-04569		7.253	60.39	0.96	8.35	29.98	11.87	88.13						29.62

**Customer:** PATRIOT RENEWABLE FUELS

**Address:** 101 PATRIOT WAY  
ANNAWAN, IL  
UNITED STATES

Analyte			Lysine	Crude ash as received	Hunter L Value	Phosphorus	Crude fat as is	NDF as received	Moisture	Drymatter	Aflatoxin	DON (Vomitoxin)	Fumonisin	T2	Zearalenon	Crude protein as received
Scheme			Amino Acid Profile	Ash Content: Feed	Hunter Color	Minerals: As Received (No Drymatter)	Fat content in Animal Feed	NDF	Moisture Content	Moisture Content	Aflatoxin by ELISA	Vomitoxin (DON) by ELISA	Fumonisin by ELISA	T2 by ELISA	Zearalenon by ELISA	Protein Content
Detection Limit						0.0063					5	0.5	1	25	25	
Unit	Received	Order	%	%(m/m)		%(m/m)	%(m/m)	%	%(m/m)	%(m/m)	PPB	PPM	PPM	PPB	PPB	%(m/m)
7/2-7/6	7/10/2012 10:34	MW12-04695	0.99	4.492	61.17	0.84	8	27.27	12.48	87.52	<5	0.669				28.46
7/9-7/13	7/20/2012 11:13	MW12-05067		5.388	59.72	0.91	8.39	27.84	11.84	88.16						29.43
7/16-7/20	7/25/2012 11:33	MW12-05175		5.6	61.43	0.92	7.63	28.67	11.33	88.67						28.34
7/23-7/27	8/1/2012 10:21	MW12-05336		4.908	62.03	0.92	7.78	26.49	11.13	88.87						27.67
7/30-8/3	8/9/2012 10:22	MW12-05559		4.308	59.24	0.82	8.36	27.58	11.25	88.75						27.2
8/6/12 GRIND COMPOSITE CORN	8/16/2012 10:29	MW12-05722		4.637	59.83	0.83	7.89	26.25	11.64	88.36						28.39
8/13-8/17	8/21/2012 10:50	MW12-05835		4.12	59.89	0.83	8.51	26.63	11.1	88.9						25.93
8/20-8/24	8/28/2012 10:23	MW12-05987		3.66	59.62	0.83	7.68	28	11.55	88.45						27.43
8/27-8/31	9/5/2012 10:23	MW12-06138		4.954	60.74	0.91	7.86	25.48	11.22	88.78	<5	0.561				28.9
9/3-9/7	9/11/2012 11:02	MW12-06307		4.528	61.65	0.85	7.82	28.6	11.45	88.55	<5	0.748				29.84
9/10-9/10	9/13/2012 11:09	MW12-06367	0.99	4.594	61.73	0.91	8.15	28.4	11.53	88.47	<5	0.58				28.01
9/10-9/13	9/18/2012 10:43	MW12-06513		4.427	60.76	0.8	7.44	25.14	11.47	88.53	<5	0.584				29.11
9/14-9/15	9/19/2012 10:12	MW12-06543		4.726	60.01	0.9	8.32	24.43	11.22	88.78	<5	0.612				29.25
9/17-9/20	9/25/2012 11:47	MW12-06686		5.286	60.09	0.82	7.58	26.25	11.05	88.95	<5	0.623				28.71
9/20-9/24	9/27/2012 10:52	MW12-06782		4.438	60.84	0.8	8.73	28.5	11.07	88.93	<5	0.585				29.39
9/25-9	10/4/2012 10:51	MW12-06947		4.543	60.73	0.87	8.11	29.22	11.49	88.51	<5	0.666				29.8
10/2-10/4	10/9/2012 10:56	MW12-07041		4.914	60.49	0.81	8.2	27.6	11.38	88.62	6	<0.5				31.09
10/5-10/10	10/15/2012 10:58	MW12-07196		4.125	62.11	0.84	8.06	25.51	11.15	88.85	<5	0.637				31.56
10/11-10/12	10/17/2012 10:49	MW12-07260		4.644	61.6	0.77	8.02	27.21	11.37	88.63	<5	0.638				30.64
10/15-10/17	10/24/2012 8:38	MW12-07398			61.65		7.62		11.91	88.09	<5	1.13	<1	29.04	<25	
10/18-10/19	10/24/2012 10:55	MW12-07437			61.85				12.14	87.86	<5	1.266	<1	28.066	<25	