



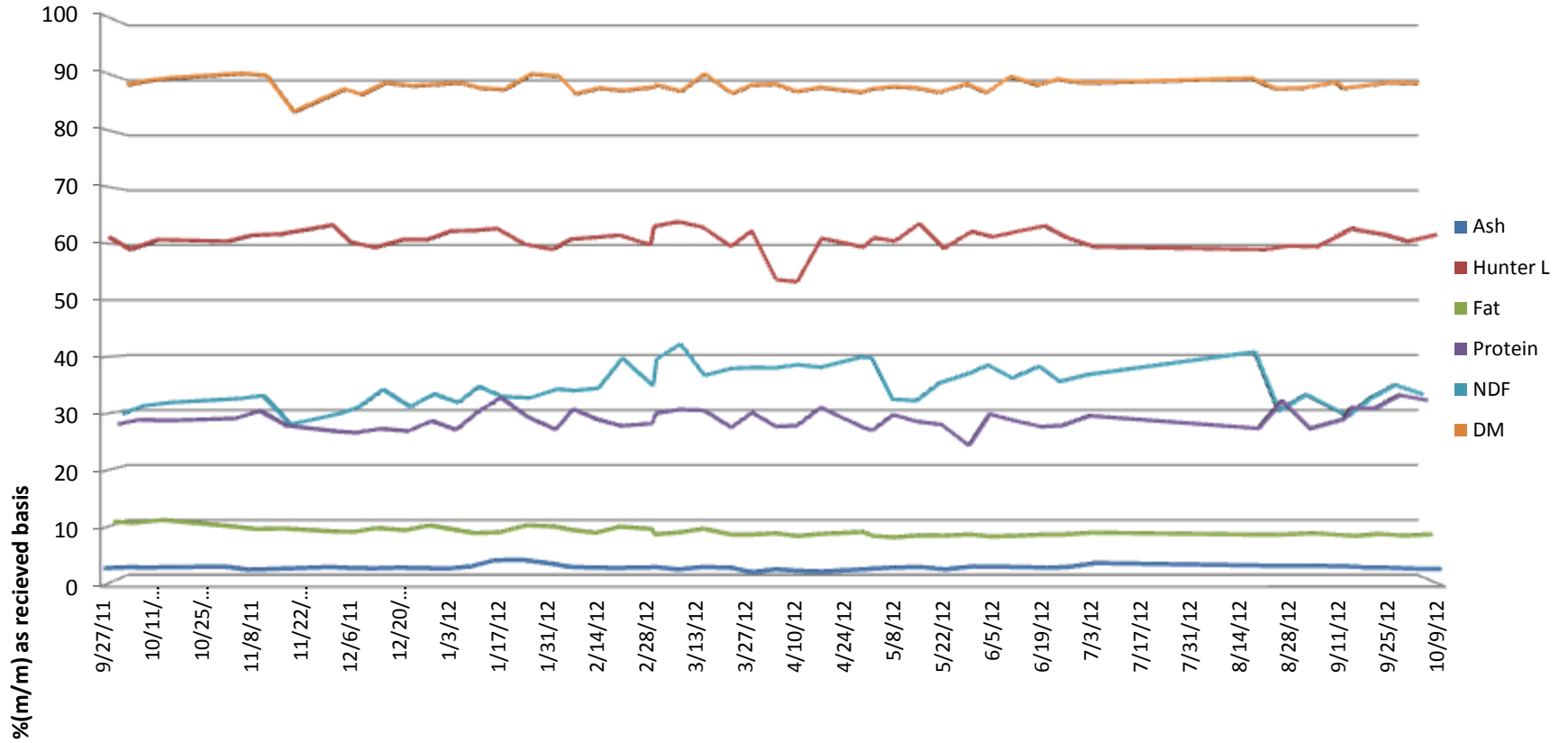
SGS Brookings  
241 34th Ave  
Brookings, SD 57006

# RED TRAIL ENERGY

Richardton, ND



5500 Cenex Drive  
Inver Grove  
Heights, MN 55077  
PH. 800-769-1066

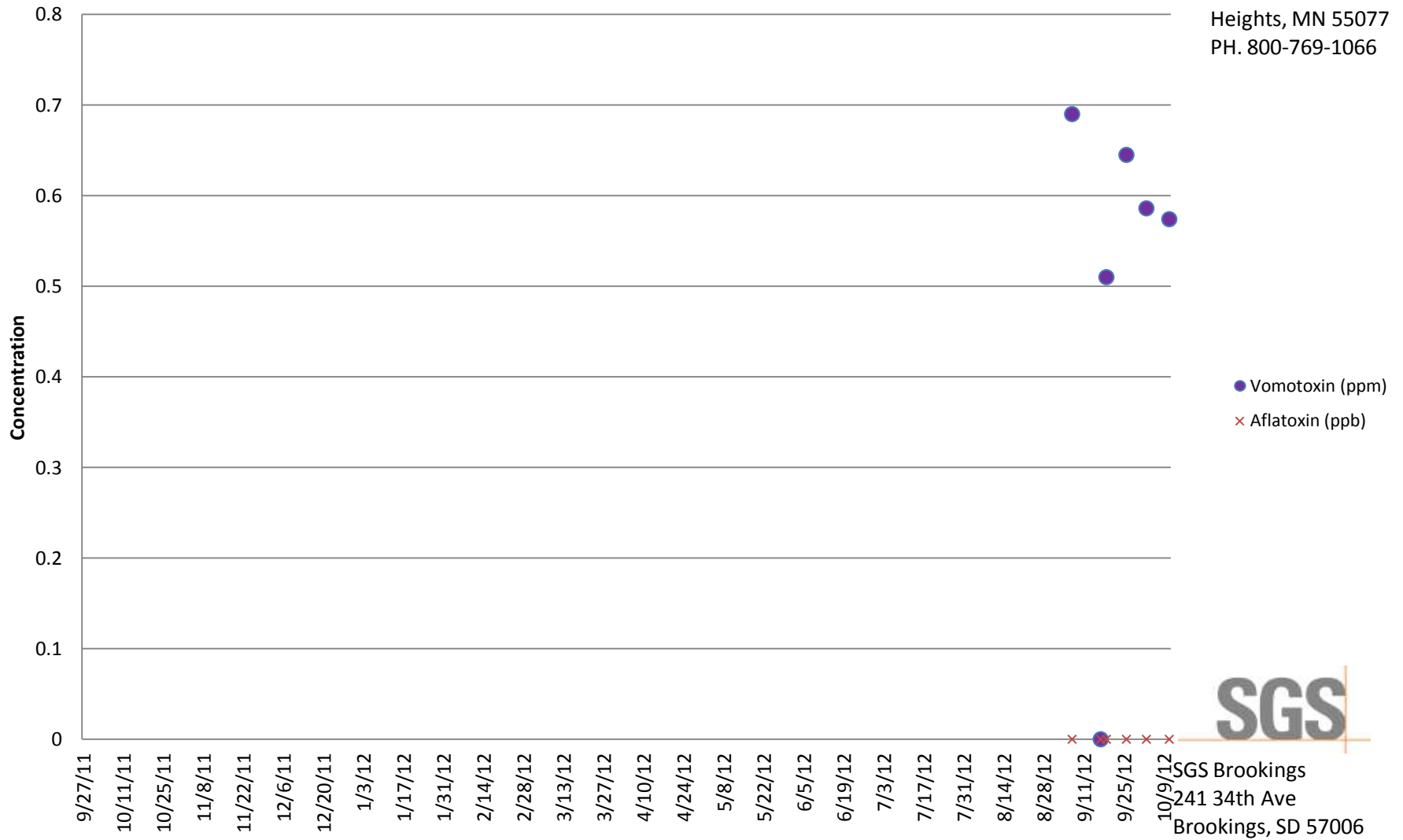


# RED TRAIL ENERGY

Richardton, ND



Inver Grove Heights, MN 55077  
PH. 800-769-1066



**Customer:** RED TRAIL ENERGY

**Address:** 3682 HWY 8 S  
RICHARDTON, ND  
UNITED STATES

Analyte				Crude ash as received	Hunter L Value	Phosphorus	Crude fat as is	NDF as received	Moisture	Drymatter	Aflatoxin	DON (Vomitoxin)	Crude protein as received
Scheme				Ash Content: Feed	Hunter Color	Minerals: As Received (No Drymatter)	Fat content in Animal Feed	NDF	Moisture Content	Moisture Content	Aflatoxin by ELISA	Vomitoxin (DON) by ELISA	Protein Content
Detection Limit						0.0063					5	0.5	
Unit	Received	Order		%(m/m)		%(m/m)	%(m/m)	%	%(m/m)	%(m/m)	PPB	PPM	%(m/m)
9-22-2011	9/27/2011 9:38	MW11-03603		3.045	61.09	0.49	10.6	29.55	10.93	89.07			27.84
DDGS 9-28-2011	10/3/2011 10:38	MW11-03732		3.189	58.95	0.65	10.42	30.96	10.17	89.83			28.61
DDGS 10/6/11	10/11/2011 11:16	MW11-03932		3.176	60.67	0.68	10.94	31.56	9.63	90.37			28.45
10/26/2011	10/31/2011 10:54	MW11-04362		3.327	60.39	0.75	9.8	32.26	8.86	91.14			28.84
11/2/2011	11/7/2011 10:25	MW11-04522		2.782	61.46	0.64	9.32	32.81	9.24	90.76			30.2
11-10-2011	11/15/2011 10:49	MW11-04698		2.922	61.65	0.93	9.42	27.63	15.81	84.19			27.53
11-23-2011	11/30/2011 9:45	MW11-05002		3.238	63.26	0.74	8.87	29.63	11.72	88.28			26.49
11/30/2011	12/5/2011 10:06	MW11-05132		3.108	60.29	0.83	8.83	30.76	12.69	87.31			26.3
12/7/2011	12/12/2011 10:09	MW11-05315		3.003	59.29	0.7	9.49	33.9	10.59	89.41			27
12/15/2011	12/20/2011 9:59	MW11-05499		3.132	60.66	0.74	9.12	30.79	11.12	88.88			26.57
12-21-2011	12/27/2011 10:01	MW11-05598		3.032	60.67	0.73	9.96	33.08	10.85	89.15			28.38
12-28-2011	1/3/2012 10:26	MW12-00005		3.001	62.2	0.71	9.23	31.54	10.57	89.43			26.81
1-4-2012	1/9/2012 11:16	MW12-00171		3.323	62.27	0.76	8.6	34.44	11.53	88.47			29.85
1-11-2012	1/16/2012 10:05	MW12-00320		4.439	62.65	0.7	8.72	32.61	11.78	88.22			32.57
1/18/12	1/24/2012 10:03	MW12-00501		4.478	59.86	0.8	9.98	32.38	8.98	91.02			29.04
1/25/12	2/1/2012 11:12	MW12-00714		3.841	58.96	0.72	9.77	33.97	9.35	90.65			26.87
2/1/2012 DDGS	2/6/2012 9:21	MW12-00816		3.286	60.74	0.69	9.16	33.7	12.54	87.46			30.49
2/6/2012	2/13/2012 9:24	MW12-00963		3.121	61.08	0.67	8.67	34.15	11.53	88.47			28.68
2/15/2012	2/20/2012 9:48	MW12-01108		3.091	61.47	0.66	9.75	39.55	11.96	88.04			27.51
2/22/12	2/29/2012 10:21	MW12-01308		3.145	59.77	0.54	9.33	34.57	11.32	88.68			27.92
2/28/12	3/1/2012 10:25	MW12-01353		3.273	63.04	0.65	8.37	39.34	10.94	89.06			29.73

**Customer:** RED TRAIL ENERGY

**Address:** 3682 HWY 8 S  
RICHARDTON, ND  
UNITED STATES

Analyte				Crude ash as received	Hunter L Value	Phosphorus	Crude fat as is	NDF as received	Moisture	Drymatter	Aflatoxin	DON (Vomitoxin)	Crude protein as received
Scheme				Ash Content: Feed	Hunter Color	Minerals: As Received (No Drymatter)	Fat content in Animal Feed	NDF	Moisture Content	Moisture Content	Aflatoxin by ELISA	Vomitoxin (DON) by ELISA	Protein Content
Detection Limit						0.0063					5	0.5	
Unit	Received	Order		%(m/m)		%(m/m)	%(m/m)	%	%(m/m)	%(m/m)	PPB	PPM	%(m/m)
3/5/2012	3/8/2012 10:04	MW12-01504		2.813	63.84	0.53	8.71	42.12	12.11	87.89			30.42
3/12/12	3/15/2012 11:37	MW12-01688		3.237	62.87	0.56	9.36	36.44	8.93	91.07			30.28
3/21/12	3/23/2012 10:02	MW12-01875		3.128	59.48	0.55	8.34	37.69	12.49	87.51			27.22
3/26/12	3/29/2012 9:35	MW12-01995		2.343	62.25	0.48	8.34	37.84	10.95	89.05			29.87
4/2/12	4/5/2012 10:24	MW12-02156		2.838	53.6	0.63	8.56	37.8	10.79	89.21			27.38
4/9/12	4/11/2012 9:19	MW12-02269		2.583	53.26	0.55	8.07	38.37	12.14	87.86			27.54
4/16/2012	4/18/2012 9:52	MW12-02449		2.455	60.92	0.5	8.45	37.9	11.39	88.61			30.79
4/23/2012	4/30/2012 10:33	MW12-02745		2.837	59.36	0.6	8.79	39.74	12.27	87.73			27.27
DDGS 4/30/12	5/3/2012 9:41	MW12-02851		2.976	61	0.63	8.09	39.6	11.71	88.29			26.72
5/7/12	5/9/2012 10:28	MW12-02976		3.151	60.42	0.61	7.84	32.15	11.29	88.71			29.5
5/14/2012	5/16/2012 10:43	MW12-03146		3.24	63.51	0.59	8.19	31.87	11.45	88.55			28.27
5/21/2012	5/23/2012 10:49	MW12-03330		2.817	59.11	0.53	8.13	35.14	12.29	87.71			27.74
5/29/2012	5/31/2012 11:17	MW12-03533		3.349	62.13	0.63	8.36	36.71	10.77	89.23			23.98
6/4/2012	6/6/2012 10:53	MW12-03673		3.282	61.17	0.63	7.99	38.3	12.32	87.68			29.61
6/11/12	6/13/2012 11:15	MW12-03903		3.253	62.12	0.57	8.11	35.95	9.41	90.59			28.46
6/18/12	6/21/2012 10:57	MW12-04128		3.102	63.11	0.56	8.34	38.08	10.94	89.06			27.36
6/25/12	6/27/2012 11:17	MW12-04328		3.243	61.08	0.63	8.34	35.34	9.94	90.06			27.55
7/2/2012	7/5/2012 10:30	MW12-04568		3.931	59.42	0.62	8.68	36.57	10.58	89.42			29.3
8/12/2012	8/23/2012 10:04	MW12-05891		3.475	58.94	0.67	8.31	40.67	9.74	90.26			27.05
8/27/12	8/30/2012 9:49	MW12-06036		3.497	59.57	0.67	8.36	30.04	11.63	88.37			32.02
9/4/2012	9/7/2012 9:42	MW12-06230		3.444	59.43	0.65	8.59	33.01	11.49	88.51	<5	0.69	27.02

**Customer:** RED TRAIL ENERGY

**Address:** 3682 HWY 8 S  
RICHARDTON, ND  
UNITED STATES

Analyte				Crude ash as received	Hunter L Value	Phosphorus	Crude fat as is	NDF as received	Moisture	Drymatter	Aflatoxin	DON (Vomitoxin)	Crude protein as received
Scheme				Ash Content: Feed	Hunter Color	Minerals: As Received (No Drymatter)	Fat content in Animal Feed	NDF	Moisture Content	Moisture Content	Aflatoxin by ELISA	Vomitoxin (DON) by ELISA	Protein Content
Detection Limit						0.0063					5	0.5	
Unit	Received	Order		%(m/m)		%(m/m)	%(m/m)	%	%(m/m)	%(m/m)	PPB	PPM	%(m/m)
9/13/12	9/17/2012 11:05	MW12-06465		3.31	62.67	0.58	8.17	29.89	10.47	89.53	<5	<0.5	28.72
9/17/12	9/19/2012 9:45	MW12-06532		3.151	62.3	0.62	8.08	29.06	11.55	88.45	<5	0.51	30.73
9/24/12	9/26/2012 10:09	MW12-06722		3.116	61.62	0.57	8.45	32.41	10.99	89.01	<5	0.645	30.68
10/1/12	10/3/2012 10:35	MW12-06912		2.951	60.38	0.49	8.14	34.7	10.52	89.48	<5	0.586	32.99
10/9/2012	10/11/2012 10:21	MW12-07107		2.909	61.53	0.55	8.38	33.07	10.68	89.32	<5	0.574	32.09
10/15/12	10/18/2012 10:32	MW12-07299		2.79	63.19	0.53	7.98	34.34	10.11	89.89	<5	0.524	32.77